



B2 international

B2 International Ltd.

OHT Board Meeting
2008 April 14

Balazs Banfai
CTO, co-founder

bbanfai@b2international.com

Company Profile

- B2 International develops and supports commercial-quality open source software
- Focusing on Eclipse-based software tooling in the healthcare industry.
- Established in Hungary in 2005, currently with 11 employees. Business partner American, half of the company was born outside of Hungary.
- Active in healthcare since inception (Eclipse OHF, HL7)

B2i Healthcare Tooling

- Prototype Static Model Designer in 2005
- HL7 Message Instance Editor
- HL7 MIF Editor / Validator
- HL7 Test message generator - Google Summer of Code
- Recently delivered Model Comparison / MIF Diff
- All the work was funded by NHS CfH and is donated to OHT under the forge project “Open Health Workbench”

- Now building the Static Model Designer component of the HL7 Modeling Tools Charter Project



My pages Projects openCollabNet

Projects > openhealthworkbench

- Open Health Tools
- Home
- Membership
- FAQ
- News and Events
- Community
- Committers, Contributors & Developers
- Charter Projects Info
- Forge Projects Info
- Legal
- Contacts

- Project tools
- Project home
- Membership

- Announcements
- Discussions

- Documents & files
- Wiki
- Subversion

- Project dashboard
- Tasks

- Issue tracker

- Project metrics

- CUBIT

Search

This project

Advanced search

- How do I...
- Learn more about

openhealthworkbench Project home

Summary	MIFF Tools
Category	forge
License	Eclipse Public License
Owner(s)	administrator
Your role(s)	Project Lead

Open Health Workbench

Open Health Workbench v1.0

Crown Copyright © 2006-2008, Copyright © 2005-2008 B2 International Ltd.,
Copyright © 2000-2008 Eclipse contributors and others. All rights reserved.

Developed by:

B2i
B2 international

openhealthworkbench Wiki: StaticModelComparison

[Edit this page](#) | [Links to this page](#) | [Page information](#) | [Attachments](#) | [Refresh page](#) | [More Actions:](#)

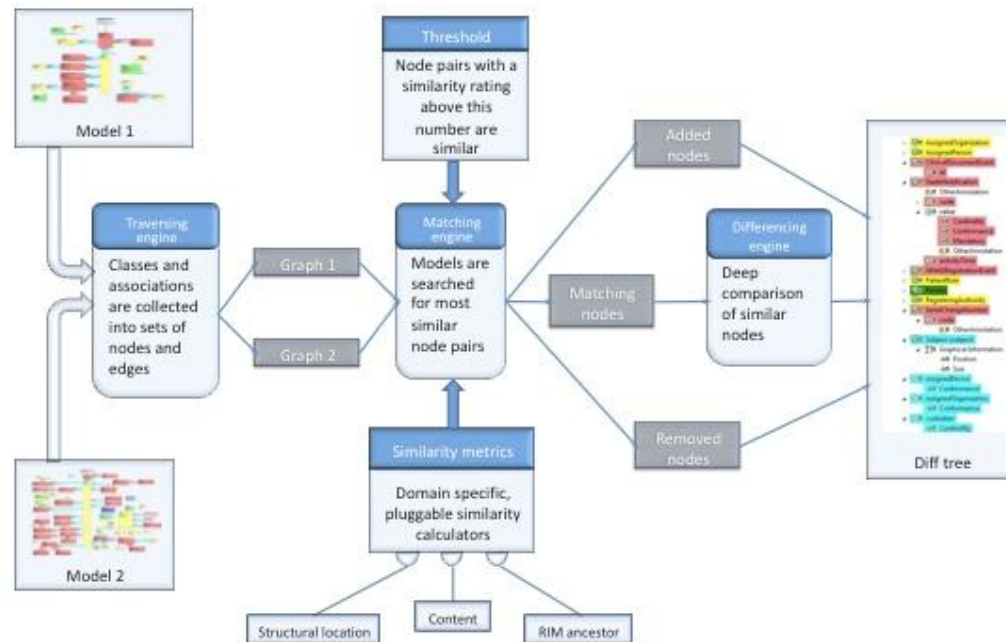
Overview

The HL7 Static Model Differencer (MIF Diff) is a tool for comparing two static models. It was primarily designed to find differences between different models might lead to numerous and often incomprehensible differences. Although message models undergo frequent changes and categorize their significance. Generic model comparison techniques identify numerous trivial changes that are insignificant require message implementers to evaluate all potential changes to message instances and processing logic. This process is currently unable to compare and display the changes between versions of a message model within an Eclipse-based model editor was required.

Compare engine

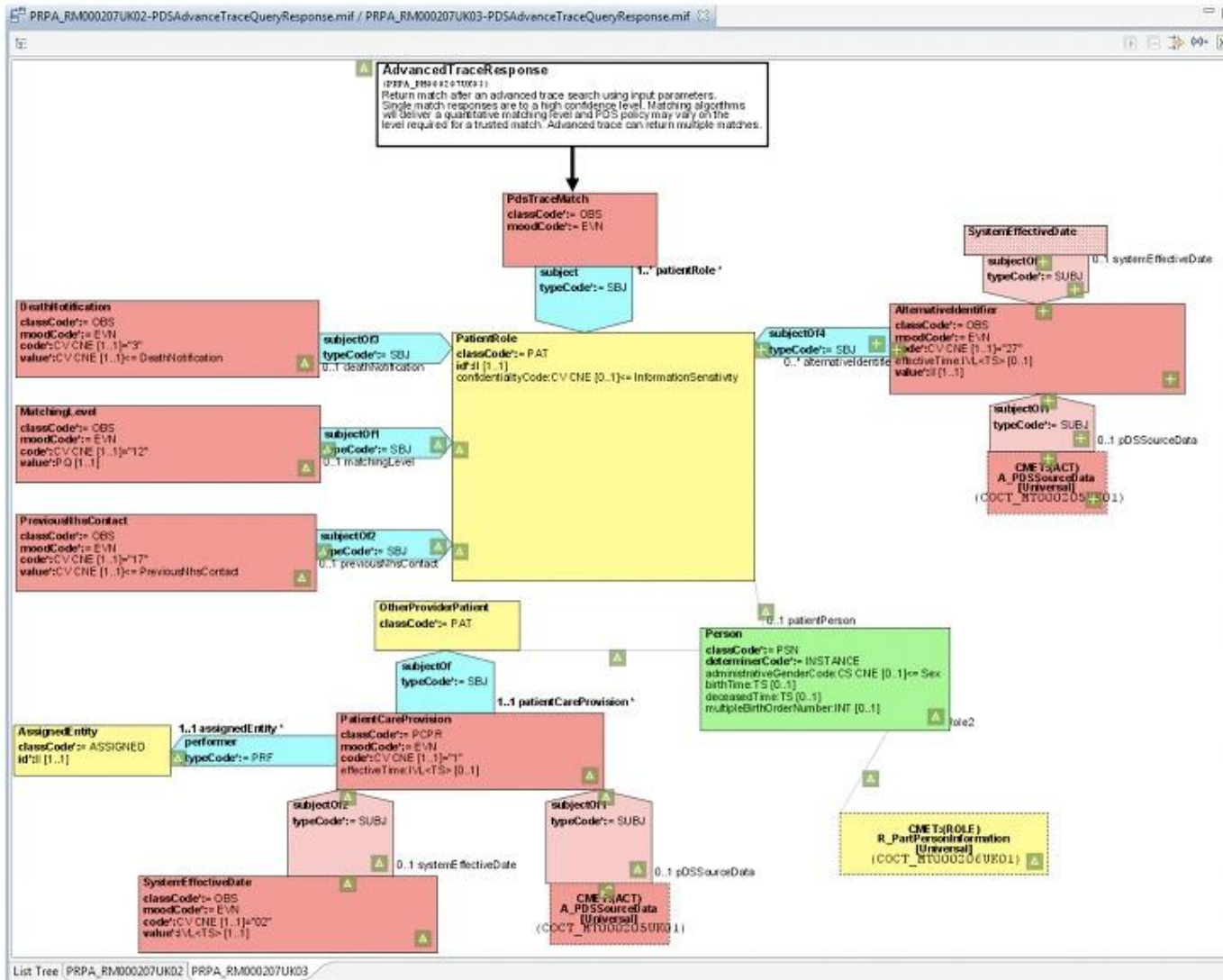
Comparing two HL7 models is a non-trivial task since these models are large, complex, and have numerous types of changes. Since a UML-like comparison algorithm is not sufficient. We found fine-tuning the comparison engine to be essential to success.

The actual model comparison algorithm consists of three main steps: traversal, matching and differencing.



Before the algorithm can identify changes, the models are first parsed using Eclipse OHF routines and then represented as graphs. The comparison algorithm consists of three main steps: traversal, matching and differencing.

The results of the model difference are displayed as either a tree view or as a graphical representation of the HL7 model. In the latter case, the model is annotated or changed model elements.



List Tree | PRPA_RM000207UK02 | PRPA_RM000207UK03

What is next?

- Now building the Static Model Designer component of the HL7 Modeling Tools Charter Project.

- Looking forward to working with OHT!